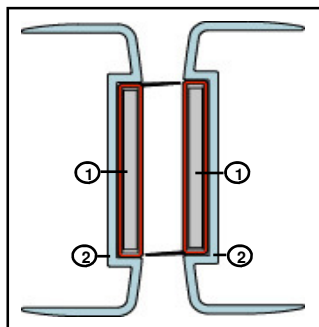


FDMS—BB

Bullnose Meeting Stile Set



Length:

Installation Details

It is not necessary to remove the door from its hinges unless otherwise specified.

STEP 1

Remove the seal from the packaging and measure the meeting edges of the door leaves to determine the seal lengths required.

STEP 2

Measure and cut the aluminium meeting stile sections to length.

STEP 3

Measure and mark the fixing hole location on the aluminium stiles. Holes should be located on the centre-line of the stiles 50mm down from the top, 50mm from the bottom & at the latch height, avoiding latch and strike plates. **(this corresponds with the doors internal reinforcing plates and ensures a good fixing).**

STEP 4

Drill 4.5mm clearance holes for the fixing screws and countersink so that the screw heads are slightly recessed under the surface of both meeting stiles.

STEP 5

With a pencil mark through the fixing holes, remove meeting stile and drill 2.5mm pilot holes through the door lipping and internal steel reinforcing plate.

STEP 6

Measure, mark and cut out holes / apertures for latch set snip and striker.

STEP 7

Re-position aluminium meeting stile sections and screw fix in place.

STEP 8

Repeat steps 2 to 7 to fix opposite aluminium meeting stile section

STEP 9

Remove backing tape from PVC encased Intumescent sections and fit into aluminium sections. Ensure smoke seal fins are offset and lightly touching the opposing stile.

STEP 10

Check doors operate correctly and that the latch engages in the strike.

IMPORTANT

Ensure that the installation of this product does not impede the self closing / self latching operation of the door. Periodic inspection and cleaning is recommended to fully maintain this sealing system.

NOTE

Recommendations as to methods for use of materials and construction details are based on the experience and knowledge of Lorient and are given in good faith as a general guide and service to designers, contractors and manufacturers.

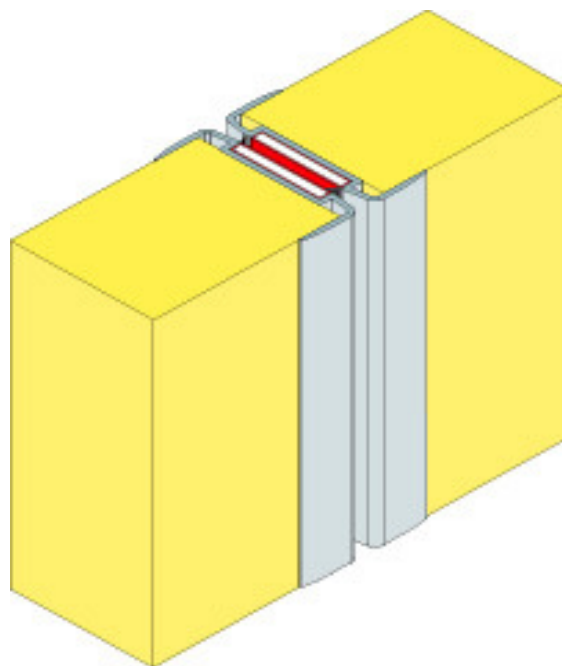
Lorient reserves the right to make alterations or delete any installation detail without prior notice.

DESCRIPTION OF CONTENTS

- Intumescent strip (1)
- Aluminium carrier (2)
- Bag of screws
- Fitting instructions

TOOLS REQUIRED FOR INSTALLATION

- Tape Measure
- Saw (Power or Hand)
- Screw Driver
- Drill (Power or Hand)
- 4.5mm Drill Bit
- 2.5mm Drill Bit
- Knife
- Pencil or marker



OTHER LORIENT ARCHITECTURAL SEALS INCLUDE: INTEGRITY™ RANGE

- Door Perimeter Seals
- Door Bottom Seals
- Automatic Door Bottom Seals
- Threshold Plates
- Brush Seals
- Magnetic Seals

Contact your nearest Lorient office for further details.