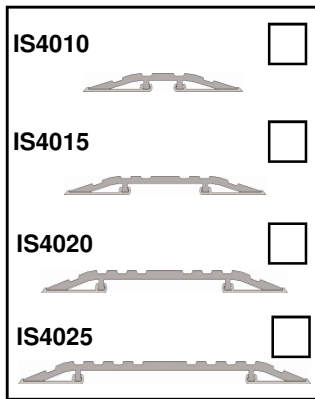


IS4010, IS4015, IS4020, IS4025 Fitting Instruction

Threshold Plates



Length:

DESCRIPTION OF CONTENTS

- Aluminium threshold
- Stainless Steel screws and plugs
- Vinyl feet
- Fitting instruction

TOOLS REQUIRED FOR INSTALLATION

- Tape measure
- Pencil or marker
- Saw (power or hand)
- Power drill
- 4.5mm drill bit
- 6mm masonry bit
- Countersink
- Construction adhesive

INSTALLATION DETAIL

STEP 1

Remove the plate from the packaging and measure the door width, between jambs or door stops to determine the plate length required.

STEP 2

Measure the threshold plate and mark the .desired length (and profile if cutting around door stop) with a pencil.

STEP 3

Pull back vinyl feet and cut the threshold plate to length using a saw. Replace the vinyl bedding feet and trim to length with knife.

STEP 4

Position the plate on the door sill in required location.

STEP 5

Screw Fix

Using a power drill with a 4.5mm drill bit, create fixing holes in the plate at required positions. Countersink to ensure flush screw heads.

With threshold plate in position, mark hole centres on floor.

Using masonry drill , create fixing holes. Clean away dust and insert supplied plastic plugs.

Screw fix the threshold in place using screws & plugs supplied.

Adhesive Fix

Apply adhesive to the back of the threshold plate and place it in the desired position. (Discard the vinyl feet if not suitable)

Note: for exterior applications Where threshold plate meets the door stop, sealant should be applied to prevent water ingress.

STEP 6

Check to ensure the door opens and closes freely.

NOTE

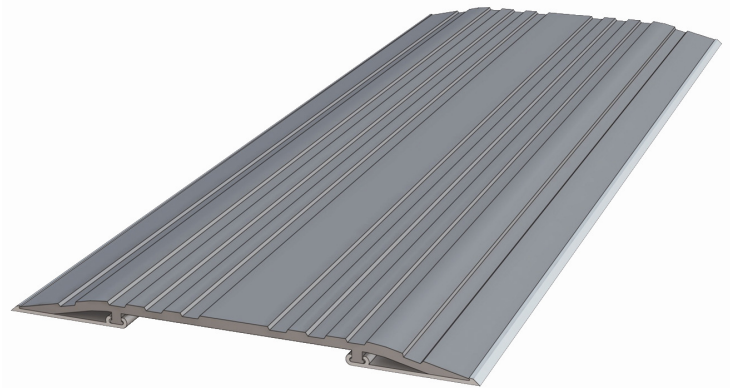
For effective operation, the IS4010, IS4015, IS4020, IS4025 threshold plates require a minimum of 8mm clearance between the door and the floor.

IMPORTANT – Ensure that the installation of this product does not impede the opening or closing of the door.

NOTE

Recommendations as to methods for use of materials and construction details are based on the experience and knowledge of Lorient and are given in good faith as a general guide and service to designers, contractors and manufacturers.

Lorient reserves the right to make alterations or delete any installation detail without prior notice.



OTHER INTEGRITY™ ARCHITECTURAL SEALS INCLUDE:

- Door Perimeter Seals
- Threshold Plates
- Door Bottom Seals
- Brush Seals
- Automatic Door Bottom Seals
- Magnetic Seals

Contact your nearest Lorient office for further details.

AUSTRALIA
Lorient Australia
Tel 1300 858 010

ASIA PACIFIC
Lorient Pacific Limited Hong Kong
Tel: (+852) 2505 0328

EUROPE
Lorient Polyproducts Ltd UK
Tel: (+44) 1626 834252

MIDDLE EAST
Lorient Middle East Building
Materials Trading LLC Dubai
Tel (+971) 4267 4339
Fax (+971) 4267 5339