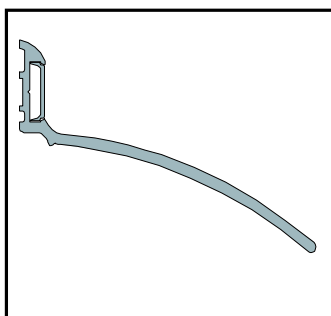




# IS9010

## Fitting Instruction

Rain Drip guard



Length

### INSTALLATION DETAIL

It is not necessary to remove the door from its hinges.– however ensure the proposed position of the guard does not interfere with the operating arc of the door

#### STEP 1

Remove the drip guard from the packaging and measure the door frame width,

#### STEP 2

Add 100mm to measured door width to provide a 50mm overhang on either side of the doorframe.

#### STEP 3

Remove flexible cover strip. Mark the guard with a pencil to the desired length and cut through using a saw.

#### STEP 4

Using a power drill with a 3mm drill bit, create fixing holes in required position.

#### STEP 5

Position the guard centrally above the door and mark out hole centres

#### STEP 6

Using a power drill with a 6mm masonry bit, create fixing holes in required position. Insert supplied fixing plugs

#### STEP 7

Apply a bead of water resistant sealant along the back face and fix the guard in position using supplied stainless steel screws.

#### STEP 8

Refit the flexible cover strip to hide screw heads and trim to length

### NOTE

For effective operation, the IS9010 drip guard requires a minimum of 50mm clearance either side of the door

**IMPORTANT – Ensure that the installation of this product does not impede the opening or closing of the door.**

### OTHER INTEGRITY™ ARCHITECTURAL SEALS INCLUDE:

- Door Perimeter Seals
- Door Bottom Seals
- Automatic Door Bottom Seals
- Threshold Plates
- Brush Seals
- Magnetic Seals

Contact your nearest Lorient office for further details.

### NOTE

*Recommendations as to methods for use of materials and construction details are based on the experience and knowledge of Lorient and are given in good faith as a general guide and service to designers, contractors and manufacturers.*

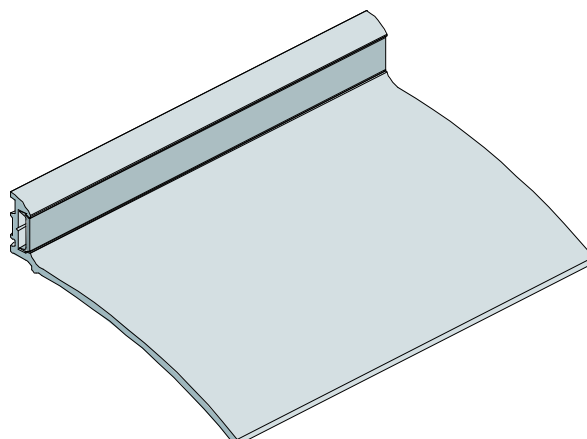
*Lorient reserves the right to make alterations or delete any installation detail without prior notice.*

### DESCRIPTION OF CONTENTS

- Aluminium drip guard
- Flexible cover strip
- Stainless steel fixing screws and plugs
- Fitting instruction

### TOOLS REQUIRED FOR INSTALLATION

- Tape measure
- Pencil or marker
- Saw (power or hand)
- Power drill
- 3mm pilot drill
- 6mm masonry drill



**Architectural Seals**

<p><b>AUSTRALIA</b> Lorient Australia Tel 1300 858 010</p> <p><b>ASIA PACIFIC</b> Lorient Pacific Limited Hong Kong Tel: (+852) 2505 0328</p> <p><b>EUROPE</b> Lorient Polyproducts Ltd UK Tel: (+44) 1626 834252</p> <p><b>MIDDLE EAST</b> Lorient Middle East Building Materials Trading LLC Dubai Tel (+971) 4267 4339 Fax (+971) 4267 5339</p>
--