

PRODUCT CODE
LP1004TS, LP1504TS, LP2004TS

DESCRIPTION

LP - TS Series combined intumescent fire and smoke seals

APPLICATION

Incorporated into the perimeter of fire door assemblies. When exposed to fire conditions, these strip seals expand to many times their original volume, sealing off the door perimeter to prevent the passage of hot smoke & other toxic gases. These seals also incorporate centrally configured fins to provide smoke control across all temperatures.

KEY FEATURES

- Twin seal (TS) provides outstanding smoke and sound containment properties.
- One seal only for fire and all temperatures of smoke.
- Rebated into the door or frame for longevity in service.
- Decorative and protective PVC outer casing.
- Available in many sizes and finishes.
- Ideal for fire engineering solutions where extra protection is necessary for life safety.

USE WITH

Used in conjunction with a Lorient door bottom solution such as the IS8010si automatic door bottom and IS4130 threshold plate to provide a total door sealing system.

MATERIALS

Lorient high performance sodium silicate based intumescent core encapsulated in a rigid flame retardant PVC outer casing with co-extruded twin smoke and acoustic fins. Supplied with aggressive self adhesive backing.

GAP SIZE

Minimum 2mm — Maximum 5mm

SIZES
Standard lengths: 1000mm, 2100mm, 2400mm, 2700mm, 3000mm

Standard twin fin height: 6mm

FINISH
Standard colours: Black, white, dark brown, grey

FIXING

The product is fitted into a groove in the door frame or the edge of the door leaf and is fixed in place using the self adhesive tape backing.

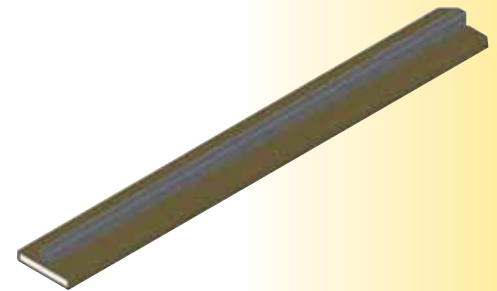
APPROVAL/S

- AS1530/4 fire tests with proprietary fire door assemblies for up to 2 hours fire rating.
- Can be considered deemed to satisfy to BCA Specification C3.4 for use with smoke doors (when fitted to compliant door leaf).
- Acoustic testing to AS1191 and AS1276 in conjunction with other Lorient Integrity™ seals.
- Independent tests have been conducted, demonstrating over 100,000 open and close cycles without significant wear.

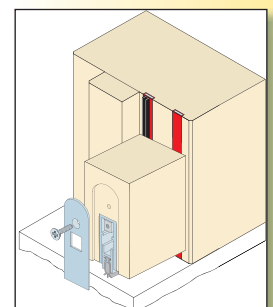
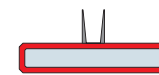
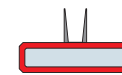
SPECIFICATIONS

Lorient LPXXYYTS combined intumescent fire and smoke seal fitted into groove into edge of door leaf (or door frame).

Insert xx = width, yy = depth of seal required.



LP-AS SERIES	CODE	WIDTH x DEPTH
	LP1004TS	10mm x 4mm
	LP1504TS	15mm x 4mm
	LP2004TS	20mm x 4mm



Right: A typical life safety installation of an LP1004TS and LP1004 in a timber frame combined with an IS8010si door bottom seal.

Below: A section showing an LP1004TS in the edge of the door on a steel frame.

