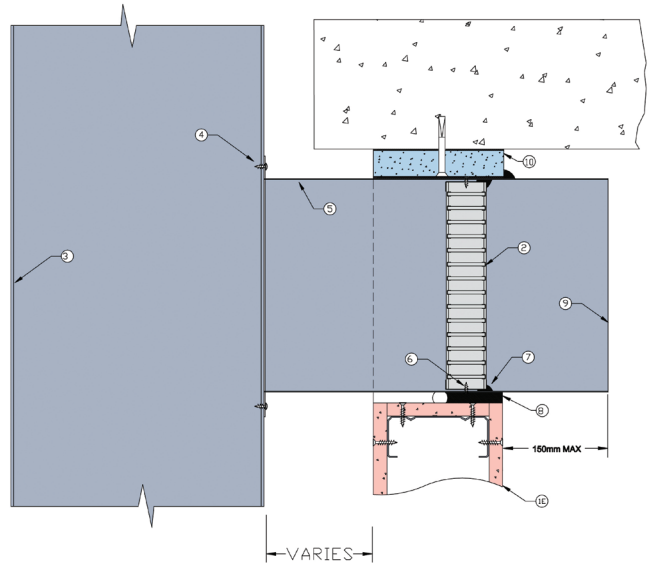


SHAFT WALL ANGLE FREE 11 TIGHT TO SLAB

FIRE RATED 16MM PLASTERBOARD SHAFT WALL SYSTEM

DESCRIPTION

1E	16mm fire rated plasterboard.
2	Lorient LVH44 intumescent fire damper.
3	Protected sheet metal riser.
4	Horizontal branch connected to riser with steel fixings or pop rivets.
5	Z275 galvanised steel branch min thickness 0.6mm.
6	Fire damper fixed to casing with steel screws.
7	Fire damper perimeter sealed with Lorient intumescent sealant.
8	Gap between casing and aperture filled full depth with Lorient intumescent sealant. Maximum annular gap between casing and wall is 25mm.
9	Casing terminates with breakaway joint as per AS1682.2.



Angle free LVH44 in steel casing connected to sheet metal riser penetrating 16mm fire rated Plasterboard shaft wall

FRL Up to -/90/60

Fire Resistance in accordance with

AS1530.4 2014

Approval Ref

EXOVA EWFA 33233400

Max single cell size

450mm x 450mm

INSTALLATION INSTRUCTIONS

- ▶ Measure and mark the position of the damper in the horizontal branch ensuring that it will be aligned within the shaft wall once the branch is attached to the riser.
- ▶ Fix damper into branch with steel screws (point 6) and seal perimeter with Lorient intumescent sealant (point 7).
- ▶ Measure branch width and cut to corresponding length, bed and mechanically fix the Intubatt block into position so that it will create the top edge of the aperture once the shaft wall is constructed.
- ▶ Liberally apply Lorient intumescent sealant to the intubatt or non-combustible block then position & mechanically fix the branch to the vertical riser with steel screws or pop rivets (point 4) ensuring that the top edge

of the duct branch is hard up against the block and all gaps are filled full depth with intumescent sealant.

- ▶ Once shaft wall has been constructed firestop the remaining gap between the casing and the wall with Lorient intumescent sealant – note fill depth details in point 8.

- ▶ Ductwork shall be connected with breakaway joints, as per point 9.
- ▶ Ensure product identification labels are conspicuously positioned for easy identification.

- ▶ Ensure convenient access is provided to allow for AS1851 inspection and maintenance routines.

- ▶ **Note: Branch casing and fixing supplied by others.**