

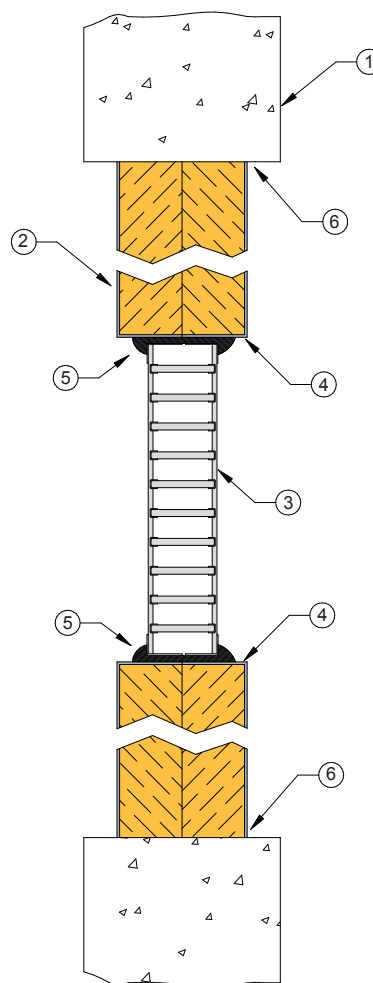
# INTUBATT 1

## FIRE RATED WALL FITTED WITH TBA FIREFLY INTUBATT SYSTEM

### DESCRIPTION

- 1 110mm minimum thick Masonry, Concrete or Hebel® wall.
- 2 2 x 50mm thick TBA Firefly Intubatt friction fitted centrally into wall aperture.
- 3 TBA Firefly Intubatt incorporates Lorient LVH44 intumescent fire damper max. 450mm x 450mm.
- 4 TBA Firefly Intubatt aperture raw edges treated with brushable TBA Firefly intumastic sealant as per test approvals.
- 5 Lorient LVH44 intumescent fire damper glued into TBA Firefly Intubatt with TBA Firefly intumastic sealant (full depth).
- 6 All other joints sealed with TBA Firefly intumastic sealant.

For TBA Firefly product enquiries visit:  
[www.tbafirefly.com.au](http://www.tbafirefly.com.au)



**Masonry, concrete  
or Hebel® wall with  
TBA Firefly Intubatt  
containing Lorient LVH44  
intumescent damper**

**FRL Up to -/120/-**

**Fire Resistance in  
accordance with**

AS1530.4 2005

**Approval Ref**

EXOVA EWFA RIR 34088500

**Max size**

450mm x 450mm

### INSTALLATION INSTRUCTIONS

- ▶ Prepare opening in wall to accept the TBA Firefly Intubatt.
  - ▶ Friction fit Intubatt into wall aperture as per test approval and see point 2.
  - ▶ Cut hole for LVH44 and prepare aperture in Intubatt, as per point 4.
  - ▶ Fit LVH44 into prepared Intubatt aperture and adhere in place using TBA Firefly intumastic sealant. Note fill details in point 5.
  - ▶ Ensure all joints are sealed, as per point 6.
  - ▶ Ensure product identification labels are conspicuously positioned for easy identification.
  - ▶ Ensure convenient access is provided to allow for AS1851 inspection and maintenance routines.
- ▶ **Note:** TBA Intubatt and TBA intumastic sealant supplied by others.