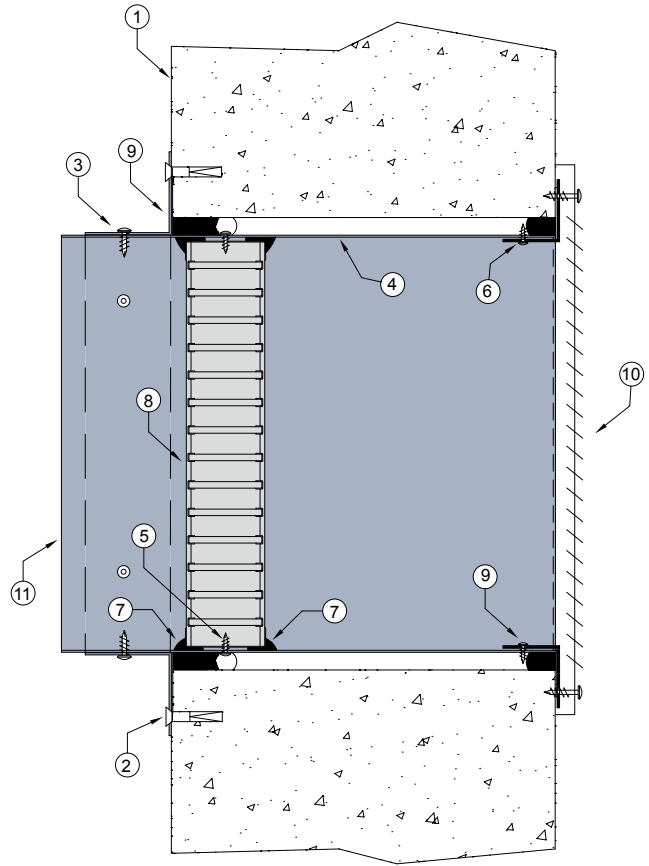


WALL 3 DUCT WITH GRILLE

FIRE RATED MASONRY / CONCRETE WALL SYSTEM

DESCRIPTION

- 1 Wall with prepared aperture.
- 2 Angles fixed to wall with steel masonry anchors at 150mm centres or at least 2 per side.
- 3 0.6mm (min) Z275 galvanised steel angles to all four sides. Angle dimensions shall be continuous and at least 2 x the dimension of the gap between the damper casing and the penetrated element.
Each angle fixed to damper casing with steel fasteners at 150mm centres or at least 2 per side.
- 4 Z275 galvanised steel casing minimum thickness 0.6mm.
- 5 Lorient LVH44 intumescent fire damper screw fixed into casing.
- 6 Casing either turned out or fitted with angles to all four sides fixed in place with steel self drilling screws.
- 7 Fire damper perimeter sealed with Lorient intumescent sealant.
- 8 LVH44 fixed to casing with steel screws.
- 9 Gap between casing and aperture filled with Lorient intumescent sealant. Backing rod used as required to control sealant fill depth. Maximum annular gap between casing and wall 25mm.
- 10 Cover grille (by others) screw fixed in place to cover aperture.
- 11 Breakaway joint as per AS1682.2 as required.



LVH44 in steel casing penetrating fire rated Masonry / Concrete wall FRL Up to -/120/60

Fire Resistance in accordance with

AS1530.4 2014

Approval Ref

CSIRO FCO 3127

Max single cell size

600mm x 600mm

Max modular size

2.4m x 1.2m or

1.2m x 2.4m

INSTALLATION INSTRUCTIONS

- ▶ Prepare the wall opening to accept the fire damper and install in wall, as shown in system detail.
- ▶ Centralise the casing and firestop the gap between the casing and wall with Lorient intumescent sealant, note fill details in point 9.
- ▶ Perimeter angles are mechanically fixed to casing with steel self drilling screws or pop rivets and to wall with steel masonry anchors, as detailed in points 2 & 3.
- ▶ Ductwork shall be connected with breakaway joints, as per point 6.
- ▶ Ensure product identification labels are conspicuously positioned for easy identification.
- ▶ Ensure convenient access is provided to allow for AS1851 inspection and maintenance routines.
- ▶ **Note: Damper casings, angles and fixings supplied by others.**