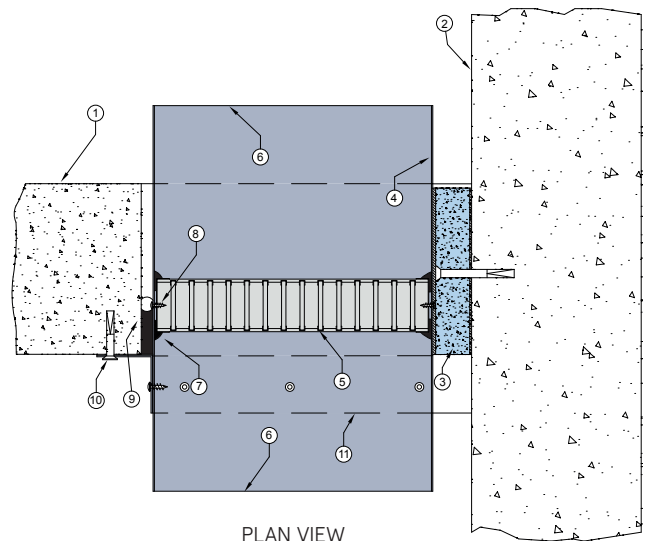


WALL 5 DUCT TIGHT TO WALL

FIRE RATED MASONRY / CONCRETE WALL SYSTEM

DESCRIPTION

- 1 Masonry or concrete wall.
- 2 Adjacent masonry or concrete wall.
- 3 100mm wide x min 25mm thick non-combustible block bedded in intumescent sealant and running across width of aperture. Block mechanically fixed to wall with expanding steel anchors.
- 4 Z275 galvanised steel damper casing 0.6mm minimum thickness.
- 5 Lorient LVH44 intumescent fire damper.
- 6 Casing terminates with breakaway joints, as per AS1682.2.
- 7 Fire damper perimeter sealed with Lorient intumescent sealant.
- 8 Fire damper fixed to casing with steel screws.
- 9 Gap between casing and aperture filled with Lorient intumescent sealant. Backing rod used as required to control sealant fill depth. Maximum annular gap between casing and wall 25mm.
- 10 Angles fixed to wall with steel masonry anchors at 150mm centres or at least 2 per side.
- 11 0.6mm (min) Z275 galvanised steel angles to all three sides. Angle dimensions shall be continuous and at least 2 x the dimension of the gap between the damper casing and the penetrated element.
Each angle fixed to damper casing with steel fasteners at 150mm centres or at least 2 per side.



LVH44 in steel casing penetrating fire rated Masonry / Concrete wall FRL Up to -/120/60

Fire Resistance in accordance with

AS1530.4 2014

Approval Ref

CSIRO FCO 3127

Max single cell size

600mm x 600mm

Max modular size

2.4m x 1.2m or

1.2m x 2.4m

INSTALLATION INSTRUCTIONS

- ▶ Prepare the wall opening to accept the fire damper and install in wall, as shown in system detail.
- ▶ Non-combustible block is fixed to wall, as per point 3.
- ▶ Lorient intumescent sealant liberally applied to block and duct containing damper is positioned and pushed up tight to packing block.
- ▶ Firestop the gap between the casing and wall with Lorient intumescent sealant, note fill details in point 9.
- ▶ 3 off perimeter angles are mechanically fixed to casing with steel self drilling screws or pop rivets and fixed to wall with masonry anchors, as detailed in point 10.
- ▶ Ductwork shall be connected with breakaway joints, as per point 6.
- ▶ Ensure product identification labels are conspicuously positioned for easy identification.
- ▶ Ensure convenient access is provided to allow for AS1851 inspection and maintenance routines.
- ▶ **Note: Damper casings, angles and fixings supplied by others.**