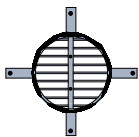


WALL 6

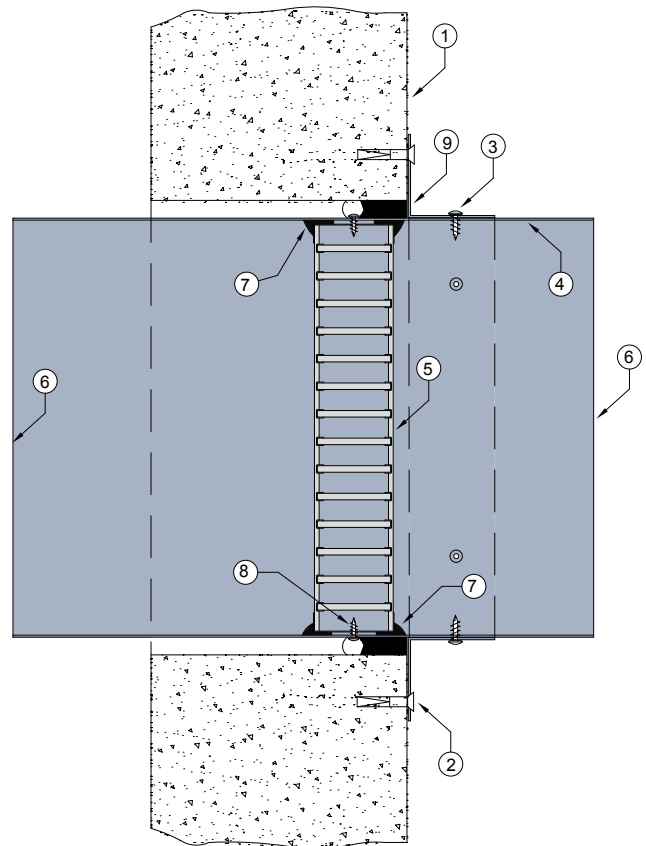
FIRE RATED MASONRY / CONCRETE WALL SYSTEM

DESCRIPTION

- 1 Wall with prepared aperture.
- 2 Angles brackets fixed to wall with steel masonry anchors.
- 3 25mm x 40mm x 40mm x 0.6mm (min) Z275 galvanised steel angle brackets fitted to damper casing with steel screws and the gap between the damper casing and wall filled with Lorient intumescent sealant.
- 4 Z275 galvanised steel casing minimum thickness 0.6mm.
- 5 Lorient LVH44C intumescent fire damper.
- 6 Casing terminates with breakaway joints, as per AS1682.2.
- 7 Fire damper perimeter sealed with Lorient intumescent sealant.
- 8 LVH44C fixed to casing with steel screws.
- 9 Gap between casing and aperture filled with Lorient intumescent sealant. Backing rod used as required to control sealant fill depth. Maximum annular gap between casing and wall 25mm.



3 off fixing angles up to 250mm diameter
4 off fixing angles 300mm to 450mm diameter



LVH44C in steel casing penetrating fire rated Masonry / Concrete wall FRL Up to -/120/60

Fire Resistance in accordance with

AS1530.4 2014

Approval Ref

EXOVA EWFA 33233400

Max size

450mm diameter

Note: LVH44C up to 250mm diameter
can achieve up to -/120/120 when fitted
with R1.0 Polyester insulated flexible duct

Approval Ref: EXOVA EWFA 55205900

INSTALLATION INSTRUCTIONS

- Prepare the wall opening to accept the fire damper and install in wall, as shown in system detail.
 - Fix angle brackets to casing with steel self drilling screws or pop rivets, as detailed in points 2 & 3.
 - Centralise in aperture and mechanically fix to wall. Firestop the gap between the casing and wall with Lorient intumescent sealant, note fill details in point 9.
 - Ductwork shall be connected with breakaway joints, as per point 6.
 - Ensure product identification labels are conspicuously positioned for easy identification.
 - Ensure convenient access is provided to allow for AS1851 inspection and maintenance routines.
- Note: Fixings supplied by others.