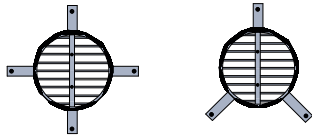
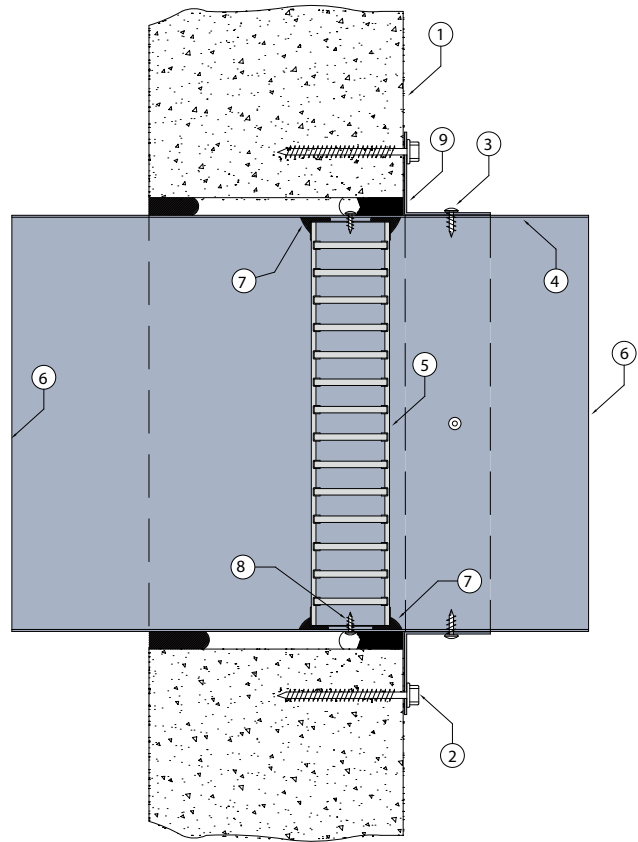


WALL 9

FIRE RATED CSR HEBEL® WALL SYSTEM

DESCRIPTION

- 1 CSR Hebel® wall with prepared aperture.
- 2 Angles fixed to wall with No.10-14 x 65mm Hex head Type 17 coarse thread screws at 150mm centres.
- 3 40 x 40 x 1mm Z275 galvanised steel angle brackets 3 off brackets for up to 300mm diameter and 4 brackets for larger sized up to 450mm diameter.
Each angle fixed to damper casing with steel fasteners.
- 4 Z275 galvanised steel casing minimum thickness 0.6mm.
- 5 Lorient LVH44C intumescent fire damper screw fixed into casing.
- 6 Casing terminates with breakaway joints, as per AS1682.2
- 7 Fire damper perimeter sealed with Lorient intumescent sealant.
- 8 LVH44C fixed to casing with steel screws.
- 9 Gap between casing and aperture filled with Lorient intumescent sealant. Backing rod used as required to control sealant fill depth. Maximum annular gap between casing and wall 25mm.



3 off fixing angles up to 250mm diameter
4 off fixing angles 300mm to 450mm diameter

**LVH44C in steel casing
penetrating fire rated
CSR Hebel® wall**

FRL Up to -/120/60

**Fire Resistance in
accordance with**

AS1530.4 2014

Approval Ref

EXOVA EWFA 33233400

Max size

450mm diameter

Note: LVH44C up to 250mm diameter
can achieve up to -/120/120 when fitted
with R1.0 Polyester insulated flexible duct

Approval Ref: EXOVA EWFA 55205900

INSTALLATION INSTRUCTIONS

- ▶ Prepare the wall opening to accept the fire damper and install in wall, as shown in system detail.
 - ▶ Centralise the casing and firestop the gap between the casing and wall with Lorient intumescent sealant, note fill details in point 9.
 - ▶ Perimeter angles are mechanically fixed to casing with steel self drilling screws or pop rivets, as detailed in points 2 & 3.
 - ▶ Ductwork shall be connected with breakaway joints, as per point 6.
 - ▶ Ensure product identification labels are conspicuously positioned for easy identification.
 - ▶ Ensure convenient access is provided to allow for AS1851 inspection and maintenance routines.
- ▶ **Note: Fixings supplied by others.**