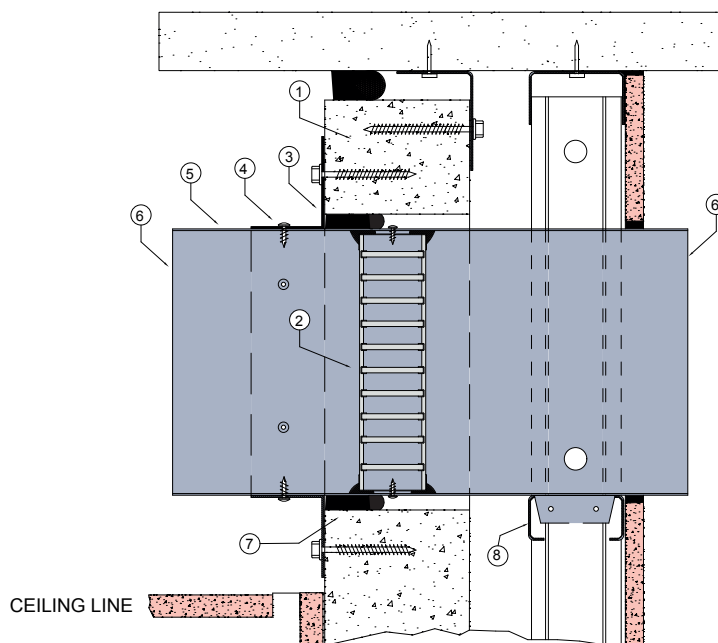


WALL 10

FIRE RATED CSR HEBEL® WALL SYSTEM

DESCRIPTION

- 1 CSR Hebel® wall installed as per manufacturers guidelines.
- 2 Lorient LVH44 intumescent fire damper.
- 3 40mm x 40mm x 0.6mm (min) Z275 galvanised steel angles to all four sides fixed to wall with No.10-14 x 65mm Hex head Type 17 screw.
- 4 Angles fixed to damper casing with steel fixings.
- 5 Z275 galvanised steel casing minimum thickness 0.6mm.
- 6 Casing terminates with breakaway joints, as per AS1682.1.
- 7 Gap between casing and aperture filled with Lorient intumescent sealant. Backing rod used as required to control sealant fill depth. Maximum annular gap between casing and wall 25mm.
- 8 Duct supported on non-fire side with noggin between studs.



**LVH44 in steel casing
penetrating fire rated
CSR Hebel® wall**

FRL Up to -/120/60

**Fire Resistance in
accordance with**

AS1530.4 2014

Approval Ref

EXOVA EWFA 33233400

Max single cell size

450mm x 450mm

INSTALLATION INSTRUCTIONS

- ▶ Prepare the wall opening to accept the fire damper and install in wall, as shown in system detail.
- ▶ Centralise the damper casing and firestop the gap between the casing and wall with Lorient intumescent sealant, see point 7 for fill details.
- ▶ Perimeter angles are mechanically fixed to casing with steel self drilling screws or pop rivets, as detailed in points 3 & 4.
- ▶ Ductwork shall be connected with breakaway joints, as per point 6.
- ▶ Ensure product identification labels are conspicuously positioned for easy identification.
- ▶ Ensure convenient access is provided to allow for AS1851 inspection and maintenance routines.
- ▶ **Note: Damper casings, angles and fixings supplied by others.**