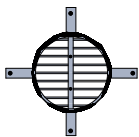
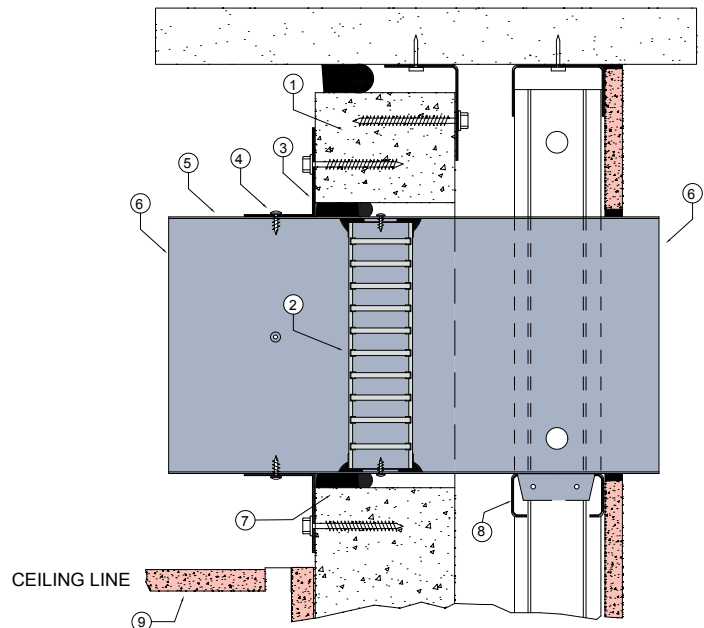


WALL 11

FIRE RATED CSR HEBEL® WALL SYSTEM

DESCRIPTION

- 1 CSR Hebel® wall installed as per manufacturers instructions.
- 2 Lorient LVH44C circular intumescent fire damper.
- 3 40 x 40mm x 25 x 1mm (min) Z275 galvanised steel angle fixed to wall with No.14-10 x 65mm Hex head Type 17 screw.
- 4 Angle brackets fixed to damper casing with steel fixings.
- 5 Z275 galvanised steel casing minimum thickness 0.6mm.
- 6 Casing terminates with slip joints in accordance with AS1682.1.
- 7 Gap between casing and aperture filled with Lorient intumescent sealant. Backing rod used as required to control sealant fill depth. Maximum annular gap between casing and wall 25mm.
- 8 Duct supported on non-fire side with noggin between studs.
- 9 AS1851 fire damper maintenance access point required this side.



3 off fixing angles up to 250mm diameter
4 off fixing angles 300mm to 450mm diameter

**LVH44C in steel casing
penetrating fire rated
CSR Hebel® wall**

FRL Up to -/120/60

**Fire Resistance in
accordance with**

AS1530.4 2014

Approval Ref

EXOVA EWFA 33233400

Max single cell size

450mm diameter

Note: LVH44C up to 250mm diameter
can achieve up to -/120/120 when fitted
with R1.0 Polyester insulated flexible duct
Approval Ref: EXOVA EWFA 55205900

INSTALLATION INSTRUCTIONS

- ▶ Prepare the wall opening to accept the fire damper and install in wall, as shown in system detail.
 - ▶ Centralise the casing and firestop the gap between the casing and wall with Lorient intumescent sealant, note fill details in point 7.
 - ▶ Perimeter angles are mechanically fixed to casing with steel self drilling screws or pop rivets, as detailed in points 3 & 4.
 - ▶ Ductwork shall be connected with breakaway joints, as per point 6.
 - ▶ Ensure product identification labels are conspicuously positioned for easy identification.
 - ▶ Ensure convenient access is provided to allow for AS1851 inspection and maintenance routines.
- ▶ **Note: Fixings supplied by others.**