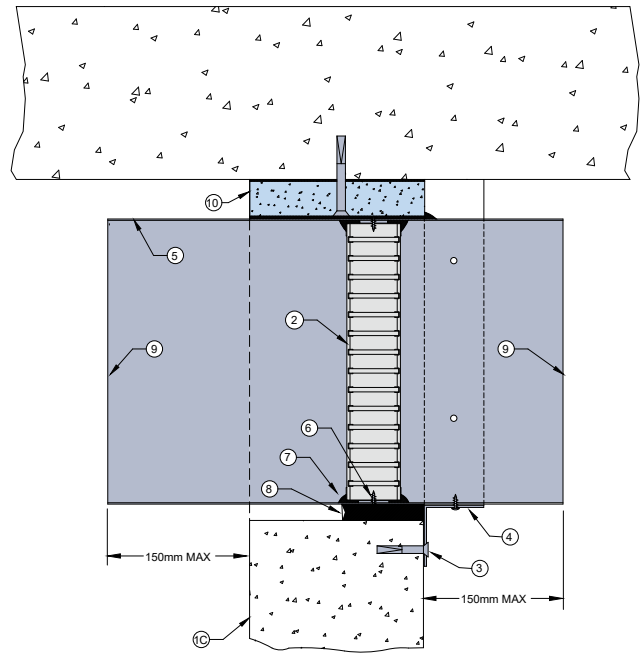


# WALL 12 TIGHT TO SLAB

## FIRE RATED CSR HEBEL® WALL SYSTEM

### DESCRIPTION

- |    |  |
|----|--|
| 1C | CSR Hebel® wall minimum 75mm thick.  |
| 2  | Lorient LVH44 intumescent fire damper.   |
| 3  | Angles fixed to wall with steel masonry anchors at 150mm centres or at least 2 per side.   |
| 4  | 0.6mm (min) Z275 galvanised steel angles to all three sides Angle dimensions shall be continuous and at least 2 x the dimension of the gap between the damper casing and the penetrated element. Each angle fixed to damper casing with steel fasteners at 150mm centres or at least 2 per side. |
| 5  | Z275 galvanised steel casing min thickness 0.6mm.  |
| 6  | Fire damper fixed to casing with steel screws.   |
| 7  | Fire damper perimeter sealed with Lorient intumescent sealant.   |
| 8  | Gap between casing and aperture filled full depth with Lorient intumescent sealant. Maximum annular gap between casing and wall is 25mm.   |
| 9  | Casing terminates with breakaway joint as per AS1682.2.  |
| 10 | 100mm wide x 50mm thick TBA Firefly Intubatt or non-combustible block running full width of aperture. Bedded in Lorient intumescent sealant and mechanically fixed to slab with steel expanding anchors.   |



### LVH44 in steel casing penetrating fire rated CSR Hebel® wall – tight to slab FRL Up to -/120/60

#### Fire Resistance in accordance with

AS1530.4 2014

#### Approval Ref

EXOVA EWFA 33233400

#### Max size

450mm x 450mm

### INSTALLATION INSTRUCTIONS

- ▶ Prepare the wall opening to accept the fire damper and install in wall, as shown in system detail.
- ▶ Non-combustible TBA Intubatt block is fixed to slab, as per point 10.
- ▶ Lorient intumescent sealant liberally applied to block and duct containing damper is positioned and pushed up tight to block.
- ▶ Firestop the gap between the casing and wall with Lorient intumescent sealant, note fill details in point 8.
- ▶ 3 off perimeter angles are mechanically fixed to bottom and sides of casing with steel self drilling screws and fixed to wall with masonry anchors, as detailed in point 3.
- ▶ Ductwork shall be connected with breakaway joints, as per point 9.
- ▶ Ensure product identification labels are conspicuously positioned for easy identification.
- ▶ Ensure convenient access is provided to allow for AS1851 inspection and maintenance routines.
- ▶ **Note: Fixings supplied by others.**