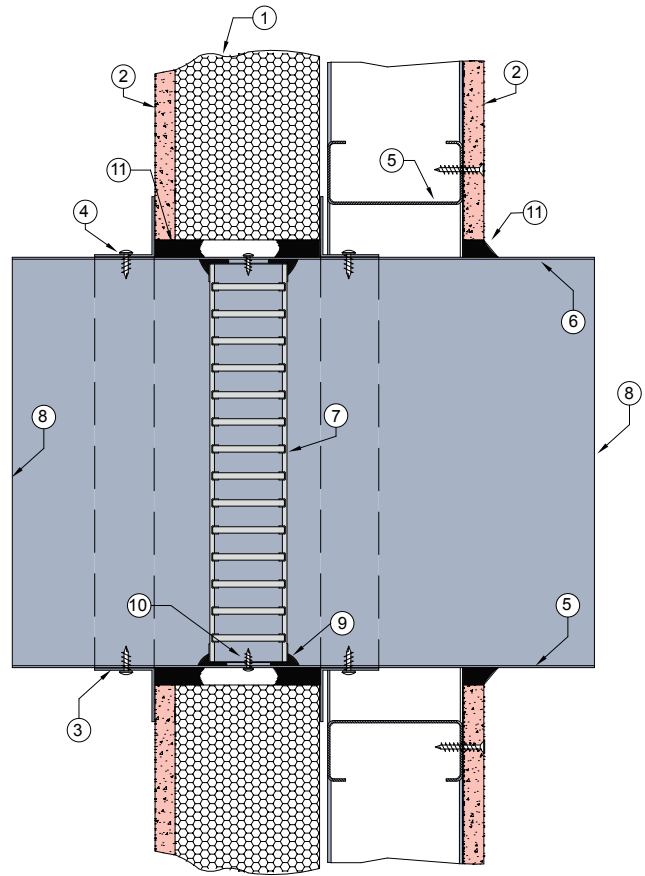


PRONTO PANEL™ 3

FIRE RATED

DESCRIPTION

- 1 Brickworks Pronto Panel™ wall as per manufacturers test report.
- 2 Plasterboard and cavity infill as per Pronto Panel™ wall system 1A or 1B.
- 3 0.6mm (min) Z275 galvanised steel angles to all four sides. Angle dimensions shall be continuous and at least 2 x the dimension of the gap between the damper casing and the penetrated element.
- 4 Each angle fixed to damper casing with steel fasteners at 150mm centres or at least 2 per side.
- 5 Steel stud supporting plasterboard sheet. Steel track used to frame out aperture around damper penetration.
- 6 Z275 galvanised steel minimum thickness minimum 0.6mm.
- 7 Lorient LVH44 intumescent fire damper.
- 8 Casing terminates with breakaway joints, as per AS1682.2.
- 9 Fire damper perimeter sealed with Lorient intumescent sealant.
- 10 LVH44 fixed to casing with steel screws.
- 11 Gap between casing and aperture filled with Lorient intumescent sealant. Backing rod used as required to control sealant fill depth. Maximum annular gap between casing and wall 25mm.



LVH44 in steel casing penetrating fire rated Pronto Panel™ wall

FRL Up to -/120/60

Fire Resistance in accordance with

AS1530.4 2014

Approval Ref

EXOVA EWFA 33233400

Max single cell size

450mm x 450mm

INSTALLATION INSTRUCTIONS

- ▶ Prepare the wall opening to accept the fire damper and install in wall, as shown in this system detail.
- ▶ Fix angle brackets to casing with steel self drilling screws or pop rivets, as detailed in points 3 & 4.
- ▶ Centralise in aperture and mechanically fix to wall. Firestop the gap between the casing and wall with Lorient intumescent sealant, note fill details in point 11.
- ▶ Fit additional studwork and plasterboard as per Brickworks system details and seal gap between wall as per point 11.
- ▶ Ductwork shall be connected with breakaway joints, as per point 8.
- ▶ Ensure product identification labels are conspicuously positioned for easy identification.
- ▶ Ensure convenient access is provided to allow for maintenance routines.
- ▶ **Note: Damper casings, angles and fixings supplied by others.**