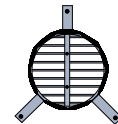
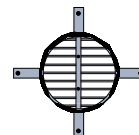
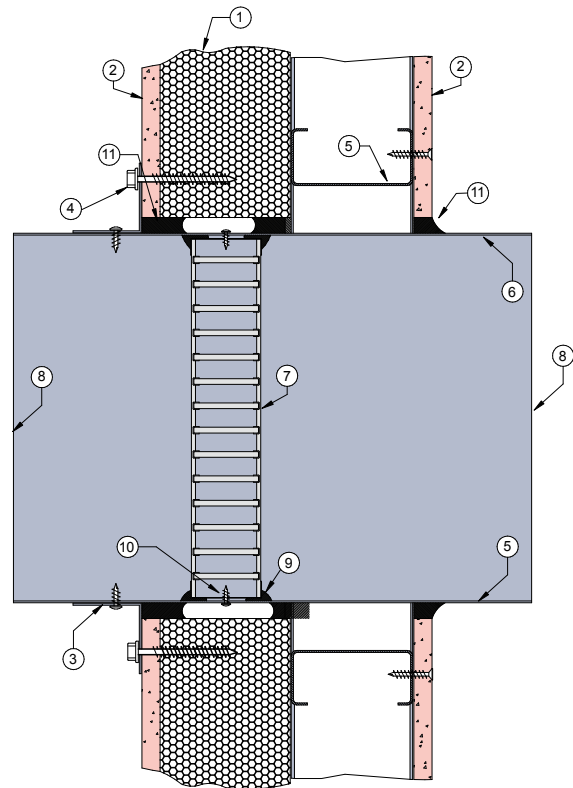


# PRONTO PANEL™ 4

## FIRE RATED

### DESCRIPTION

- 1 Brickworks Pronto Panel™ wall as per manufacturers test report.
- 2 Plasterboard and cavity infill as per Pronto Panel™ wall system 1A or 1B.
- 3 40mm x 40mm x 25mm x 1mm steel angles fixed to casing with steel screws.
- 4 Angle bracket fixed to wall with number 10 x 50mm steel Hex Head Type 17 screws.
- 5 Steel stud supporting plasterboard sheet. Steel track used to frame out aperture around damper penetration.
- 6 Z275 galvanised steel casing minimum thickness minimum 0.6mm.
- 7 Lorient LVH44C intumescent fire damper.
- 8 Casing terminates with breakaway joints, as per AS1682.2.
- 9 Fire damper perimeter sealed with Lorient intumescent sealant.
- 10 LVH44C fixed to casing with steel screws.
- 11 Gap between casing and aperture filled with Lorient intumescent sealant. Backing rod used as required to control sealant fill depth. Maximum annular gap between casing and wall 25mm.



3 off fixing angles up to 250mm diameter  
4 off fixing angles 300mm to 450mm diameter

### LVH44C in steel casing penetrating fire rated Pronto Panel™ wall

### FRL Up to -/120/60

#### Fire Resistance in accordance with

AS1530.4 2014

#### Approval Ref

EXOVA EWFA 33233400

#### Max size

450mm diameter

Note: LVH44C up to 250mm diameter  
can achieve up to -/120/120 when fitted  
with R1.0 Polyester insulated flexible duct

Approval Ref: EXOVA EWFA 55205900

### INSTALLATION INSTRUCTIONS

- ▶ Prepare the wall opening to accept the fire damper and install in wall, as shown in this system detail.
- ▶ Fix angle brackets to casing with steel self drilling screws or pop rivets, as detailed in points 3 & 4.
- ▶ Centralise in aperture and mechanically fix to wall. Firestop the gap between the casing and wall with Lorient intumescent sealant, note fill details in point 11.
- ▶ Fit additional studwork and plasterboard as per Brickworks system details and seal gap between wall as per point 11.
- ▶ Ductwork shall be connected with breakaway joints, as per point 8.
- ▶ Ensure product identification labels are conspicuously positioned for easy identification.
- ▶ Ensure convenient access is provided to allow for maintenance routines.
- ▶ **Note: Fixings supplied by others.**