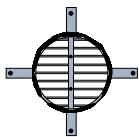


PRONTO PANEL™ 6

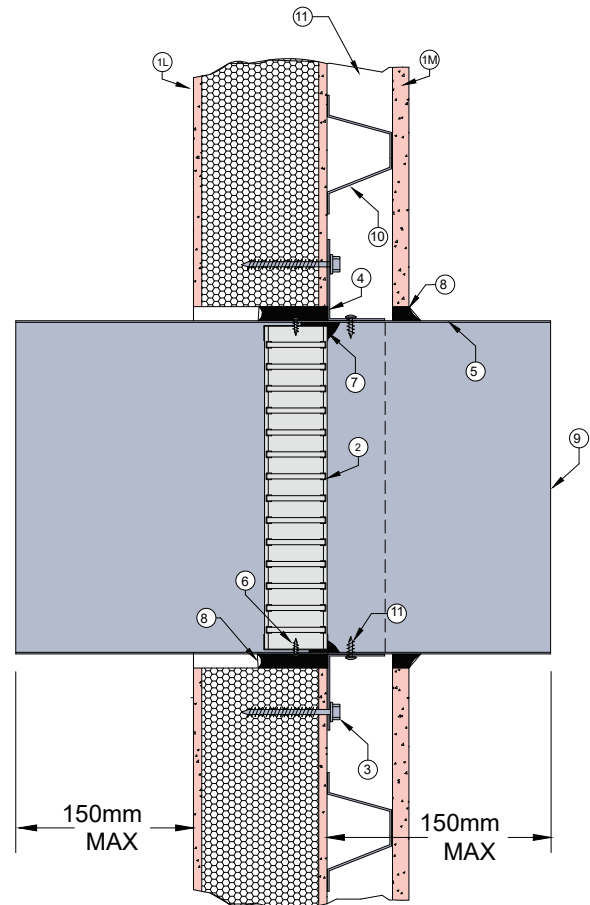
FIRE RATED

DESCRIPTION

1L	60mm thick Pronto Panel™.
1M	13mm thick fire rated plasterboard
2	Lorient LVH44C intumescent fire damper.
3	Brackets fixed to wall with steel 10 x 50mm hex head type 17 screws.
4	40mm x 40mm x 25mm x 1mm steel angles fixed to casing with steel self drilling screws.
5	Z275 galvanised steel casing min thickness 0.6mm.
6	Fire damper fixed to casing with steel screws.
7	Fire damper perimeter sealed with Lorient intumescent sealant.
8	Gap between casing and aperture filled full depth with Lorient intumescent sealant. Maximum annular gap between casing and wall is 25mm.
9	Casing terminates with breakaway joint as per AS1682.2.
10	40 x .048 BMT top hat section or 28mm furring channel and clip min 40mm cavity.
11	50mm thick 14kg/m³ glass wool insulation.



3 off fixing angles up to 250mm diameter
4 off fixing angles 300mm to 450mm diameter



PRONTO PANEL™ WALLS

**LVH44C in steel casing
penetrating fire rated
Pronto Panel™ wall**

FRL Up to -/120/60

**Fire Resistance in
accordance with**

AS1530.4 2014

Approval Ref

EXOVA EWFA 33233400

Max size

450mm diameter

Note: LVH44C up to 250mm diameter
can achieve up to -/120/120 when fitted
with R1.0 Polyester insulated flexible duct

Approval Ref: EXOVA EWFA 55205900

INSTALLATION INSTRUCTIONS

- ▶ Prepare the wall opening to accept the fire damper and install in wall, as shown in this system detail.
- ▶ Fix angle brackets to casing with steel self drilling screws or pop rivets, as detailed in points 3 & 4.
- ▶ Centralise damper in pronto panel aperture and mechanically fix to wall. Firestop the gap between the casing and wall with Lorient intumescent sealant, note fill details in point 8.
- ▶ Fit additional plasterboard as per Brickworks system details and seal gap between wall and casing as per point 8.
- ▶ Ductwork shall be connected with breakaway joints, as per point 9.
- ▶ Ensure product identification labels are conspicuously positioned for easy identification.
- ▶ Ensure convenient access is provided to allow for maintenance routines.
- ▶ **Note: Damper casings, angles and fixings supplied by others.**