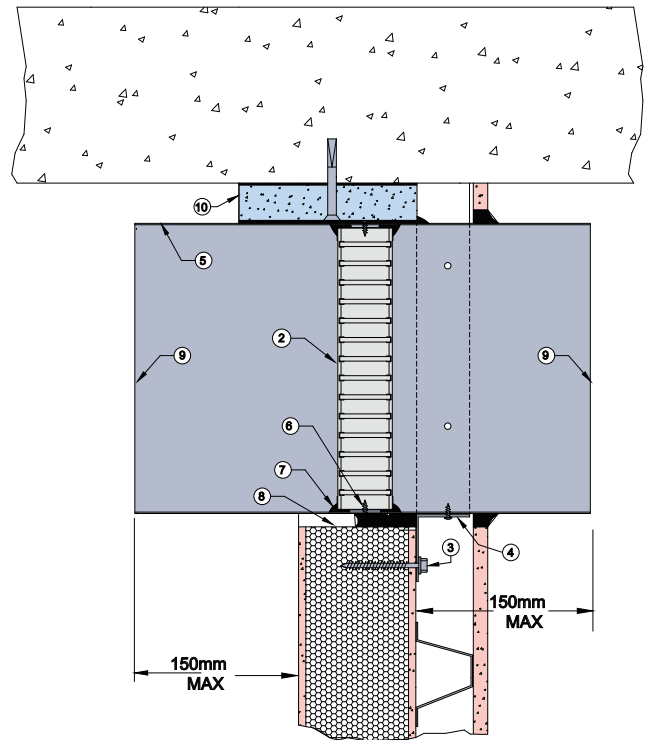


PRONTO PANEL™ 8

FIRE RATED

DESCRIPTION

- | | |
|-----------|--|
| 1L | 60mm thick Pronto Panel™. |
| 1M | 13mm thick fire rated plasterboard. |
| 2 | Lorient LVH44 intumescent fire damper. |
| 3 | Each angle fixed to damper casing with steel fasteners at 150mm centres or at least 2 per side. |
| 4 | 0.6mm (min) Z275 galvanised steel angles to all three sides Angle dimensions shall be continuous and at least 2 x the dimension of the gap between the damper casing and the penetrated element. |
| 5 | Z275 galvanised steel casing min thickness 0.6mm. |
| 6 | Fire damper fixed to casing with steel screws. |
| 7 | Fire damper perimeter sealed with Lorient intumescent sealant. |
| 8 | Gap between casing and aperture filled with Lorient intumescent sealant. Maximum annular gap between casing and wall is 25mm. |
| 9 | Casing terminates with breakaway joint as per AS1682.2. |
| 10 | 100mm wide x 50mm thick TBA Firefly Intubatt or non-combustible block running full width of aperture. Bedded in Lorient intumescent sealant and mechanically fixed to slab with steel expanding anchors. |



PRONTO PANEL™ WALLS

**LVH44 in steel casing
penetrating fire rated
Pronto Panel™ wall tight
to slab**

FRL Up to -/120/60

**Fire Resistance in
accordance with**

AS1530.4 2014

Approval Ref

EXOVA EWFA 33233400

Max size

450mm x 450mm

INSTALLATION INSTRUCTIONS

- ▶ Prepare the wall opening to accept the fire damper and install in wall, as shown in this system detail.
- ▶ Non-combustible or TBA Intubatt block is fixed to slab, as per point 10.
- ▶ Lorient intumescent sealant liberally applied to block and duct containing damper is positioned and pushed up tight to block.
- ▶ Firestop the gap between the casing and wall with Lorient intumescent sealant, note fill details in point 8.
- ▶ 3 off perimeter angles are mechanically fixed to bottom and sides of casing with steel self drilling screws and fixed to wall with masonry anchors, as detailed in point 3 & 4.
- ▶ Fit additional plasterboard as per Brickworks system details and seal gap between wall as per point 8.
- ▶ Ductwork shall be connected with breakaway joints, as per point 9.
- ▶ Ensure product identification labels are conspicuously positioned for easy identification.
- ▶ Ensure convenient access is provided to allow for AS1851 inspection and maintenance routines.
- ▶ **Note: Damper casing, angles and fixings supplied by others.**