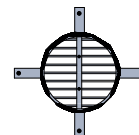
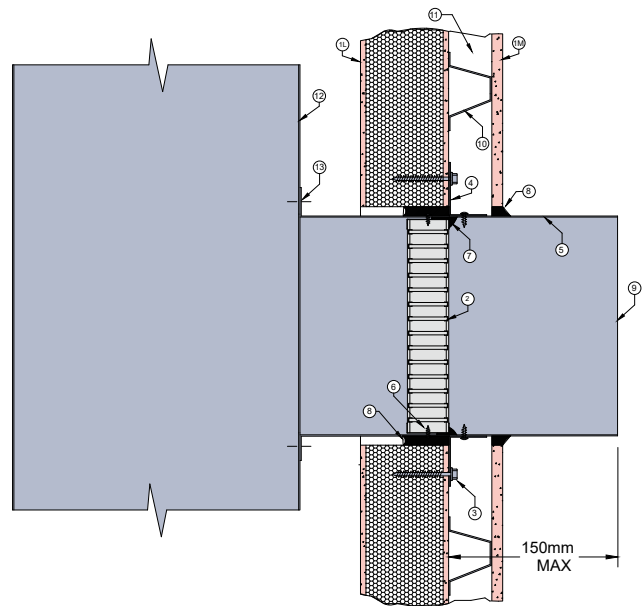


PRONTO PANEL™ 9

FIRE RATED

DESCRIPTION

- | | |
|-----------|---|
| 1L | 60mm thick Pronto Panel™. |
| 1M | 13mm thick fire rated plasterboard. |
| 2 | Lorient LVH44C circular intumescent fire damper. |
| 3 | 40mm x 40mm x 25mm x 1mm brackets fixed to wall with steel 10 x 50 hex head type 17 screws. |
| 4 | Angle brackets fixed to damper casing with steel self-drilling screws. |
| 5 | Z275 galvanised steel casing min thickness 0.6mm. |
| 6 | Fire damper fixed to casing with steel screws. |
| 7 | Fire damper perimeter sealed with Lorient intumescent sealant. |
| 8 | Gap between casing and aperture filled with Lorient intumescent sealant. Maximum annular gap between casing and wall is 25mm. |
| 9 | Casing terminates with breakaway joint as per AS1682.2. |
| 10 | 40 x .048 BMT top hat section or 28mm furring channel and clip min 40mm cavity. |
| 11 | 50mm thick 14kg/m ³ glass wool insulation. |
| 12 | Protected sheet metal riser. |
| 13 | Branch mechanically connected to riser with steel fixings. |



3 off fixing angles up to 250mm diameter
4 off fixing angles 300mm to 450mm diameter

LVH44C in steel casing penetrating fire rated Pronto Panel™ shaft wall FRL Up to -/120/60

Fire Resistance in accordance with

AS1530.4 2014

Approval Ref

EXOVA EWFA 33233400

Max size

450mm diameter

INSTALLATION INSTRUCTIONS

- ▶ Measure and mark the position of the damper in the horizontal branch ensuring that it will be aligned within the shaft wall once the branch is attached to the riser and the shaft wall is constructed.
- ▶ Fix damper into branch with steel screws (point 5) and seal perimeter with Lorient intumescent sealant (point 7).
- ▶ Mechanically fix the branch to the vertical riser with steel screws or pop rivets (point 13).
- ▶ Once shaft wall has been constructed, firestop the gap between the casing and the wall with Lorient intumescent sealant – note fill depth details in point 8.
- ▶ Ductwork shall be connected with breakaway joints, as per point 9.
- ▶ Ensure product identification labels are conspicuously positioned for easy identification.
- ▶ Ensure convenient access is provided to allow for AS1851 inspection and maintenance routines.
- ▶ **Note: Damper casings, angles and fixings supplied by others.**