

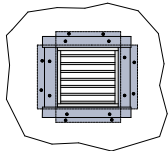
SHAFT WALL 4

FIRE RATED PLASTERBOARD SHAFT WALL SYSTEM

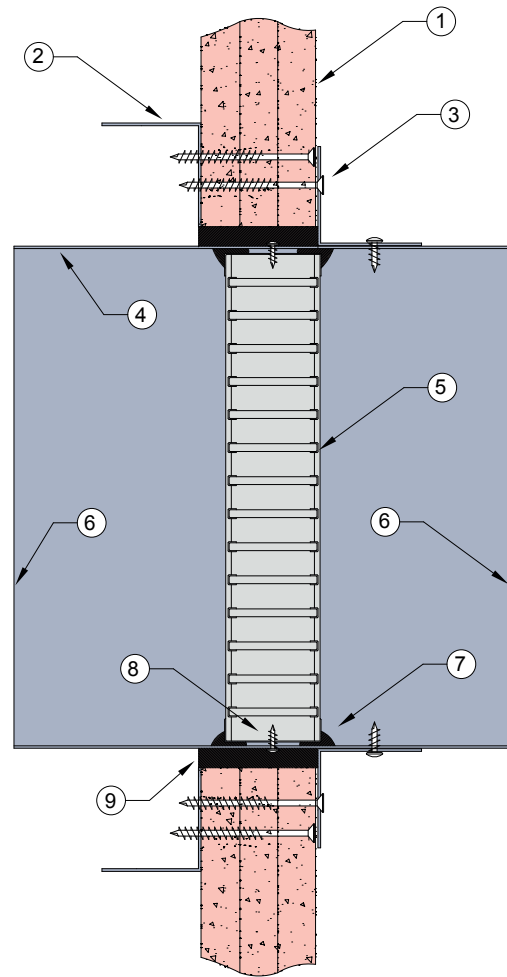
DESCRIPTION

- | | |
|---|---|
| 1 | 3 x 13mm or 3 x 16mm fire rated plasterboard. |
| 2 | 40mm x 40mm 0.6mm Z275 steel angle fixed through wall with 60mm long steel needle point screws. |
| 3 | 40mm x 40mm x 0.6mm Z275 galvanised steel angles to all four sides. Angle dimensions shall be continuous and at least 2 x the dimension of the gap between the damper casing and the penetrated element.

Each angle fixed to damper casing with 60mm long steel needle point screws at 150mm centres or at least 2 per side. |
| 4 | Z275 galvanised steel casing minimum thickness 0.6mm. |
| 5 | Lorient LVH44 intumescent fire damper screw fixed into casing. |
| 6 | Casing terminates with breakaway joints, as per AS1682.2. |
| 7 | Fire damper perimeter sealed with Lorient intumescent sealant. |
| 8 | Fire damper fixed to casing with steel screws. |
| 9 | Gap between casing and aperture filled with Lorient intumescent sealant. Maximum annular gap between casing and wall 25mm. |



Rondo 40 x 40mm equal angle fixed around aperture to provide anchor point for fixing angle brackets 4 off fixing angles required as shown.



**LVH44 in steel casing
penetrating fire rated
laminated Plasterboard
Shaft wall**

FRL Up to -/120/-

**Fire Resistance in
accordance with**

AS1530.4 2014

Approval Ref

EXOVA EWFA 33233400

Max single cell size

450mm x 450mm

INSTALLATION INSTRUCTIONS

- ▶ Prepare the wall opening to accept the fire damper and install in wall, as shown in system detail.
- ▶ Fix reinforcing angles to inside of wall as shown above. Fix angle brackets to damper casing, as per point 2 & 3.
- ▶ Centralise in aperture and mechanically fix through wall into opposing angle. Firestop the gap between the casing and wall with Lorient intumescent sealant, note fill details in point 9.
- ▶ Ductwork shall be connected with breakaway joints, as per point 6.
- ▶ Ensure product identification labels are conspicuously positioned for easy identification.
- ▶ Ensure convenient access is provided to allow for AS1851 inspection and maintenance routines.
- ▶ **Note: Damper casings, angles and fixings supplied by others.**