

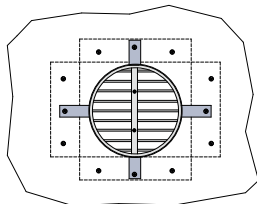
## SHAFT WALLS

# SHAFT WALL 5

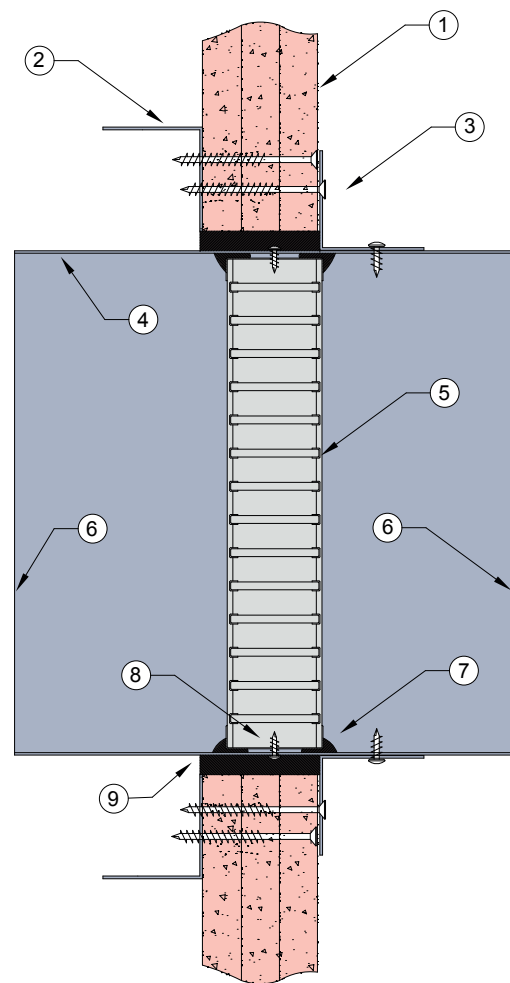
## FIRE RATED PLASTERBOARD SHAFT WALL SYSTEM

### DESCRIPTION

- 1 3 x 13mm or 3 x 16mm fire rated plasterboard.
- 2 40mm x 40mm x 0.6mm Z275 galvanised steel reinforcing angles fixed around aperture with 60mm long steel needle point screws.
- 3 0.6mm (min) 25mm x 40mm x 40mm Z275 galvanised steel angles fitted to casing with steel self drilling screws or pop rivets. Damper angles fixed through wall into reinforcing angles with 60mm needle point self drilling screws as shown.
- 4 Z275 galvanised steel casing minimum thickness 0.6mm.
- 5 Lorient LVH44C circular intumescent fire damper screw fixed into casing.
- 6 Casing terminates with breakaway joints, as per AS1682.2.
- 7 Fire damper perimeter sealed with Lorient intumescent sealant.
- 8 Fire damper fixed to casing with steel screws.
- 9 Gap between casing and aperture filled with Lorient intumescent sealant. Backing rod used as required to control sealant fill depth. Maximum annular gap between casing and wall 20mm.



Rondo 40mm x 40mm equal angle fixed around aperture to provide anchor point for fixing angle brackets 4 off fixing angles required as shown.



### LVH44C in steel casing penetrating fire rated Plasterboard Shaft wall FRL Up to -/120/-

#### Fire Resistance in accordance with

AS1530.4 2014

#### Approval Ref

EXOVA EWFA 33233400

#### Max size

450mm diameter

### INSTALLATION INSTRUCTIONS

- ▶ Prepare the wall opening to accept the fire damper and install in wall, as shown in system detail.
- ▶ Fix reinforcing angles to inside of wall as shown above. Fix angle brackets to damper casing, as per point 2 & 3.
- ▶ Centralise in aperture and mechanically fix through wall into opposing angle. Firestop the gap between the casing and wall with Lorient intumescent sealant, note fill details in point 9.
- ▶ Ductwork shall be connected with breakaway joints, as per point 6.
- ▶ Ensure product identification labels are conspicuously positioned for easy identification.
- ▶ Ensure convenient access is provided to allow for AS1851 inspection and maintenance routines.
- ▶ **Note: Fixings and angles supplied by others.**