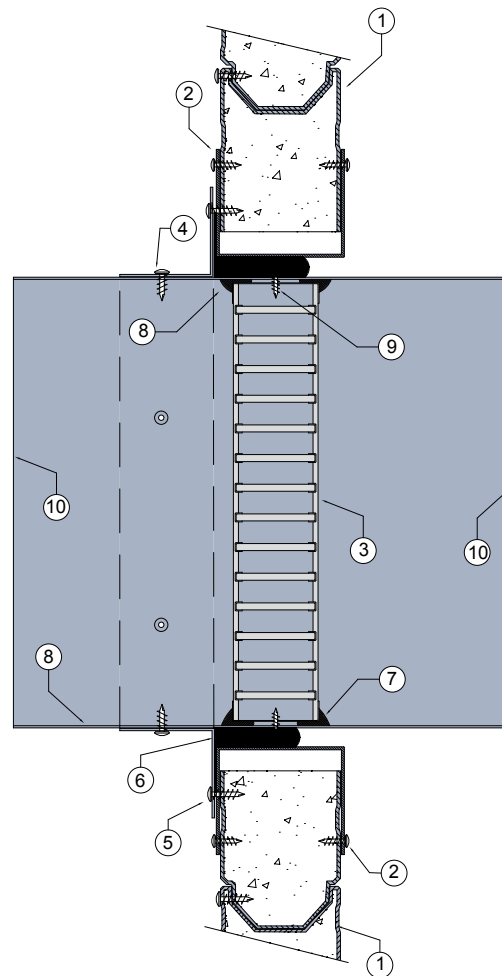


SPEEDPANEL® 3

FIRE RATED SPEEDPANEL® WALL SYSTEM

DESCRIPTION

- 1 Speedpanel® wall system.
- 2 Aperture lined out with galvanised steel C track section and screw fixed to wall with steel fixings, as per Speedpanel® test approvals.
- 3 Lorient LVH44 intumescent fire damper.
- 4 Angles fixed to casing with steel self drilling screws at 150mm centres.
- 5 0.6mm (min) Z275 galvanised steel angles to all four sides. Angle dimensions shall be continuous and at least 2 x the dimension of the gap between the damper casing and the penetrated element.
- 6 Gap between casing and aperture filled with Lorient intumescent sealant. Backing rod used as required to control sealant fill depth. Maximum annular gap between casing and wall 25mm.
- 7 Fire damper perimeter sealed with Lorient intumescent sealant.
- 8 Z275 galvanised steel casing minimum 0.6mm.
- 9 LVH44 fixed to casing with steel self drilling screws or pop rivets.
- 10 Casing terminates with breakaway joints, as per AS1682.2.



LVH44 in steel casing penetrating fire rated Speedpanel® wall

FRL Up to -/120/30

Fire Resistance in accordance with

AS1530.4 2014

Approval Ref

EXOVA EWFA 33233400

Max single cell size

450mm x 450mm

INSTALLATION INSTRUCTIONS

- ▶ Prepare the wall opening to accept the fire damper and install in wall, as shown in system detail.
 - ▶ Centralise the casing and firestop the gap between the casing and wall with Lorient intumescent sealant, note fill details in point 6.
 - ▶ Perimeter angles are mechanically fixed to casing with steel self drilling screws or pop rivets, as detailed in points 4 & 5.
 - ▶ Ductwork shall be connected with breakaway joints, as per point 10.
 - ▶ Ensure product identification labels are conspicuously positioned for easy identification.
 - ▶ Ensure convenient access is provided to allow for AS1851 inspection and maintenance routines.
- ▶ **Note:** Damper casings, angles and fixings supplied by others.