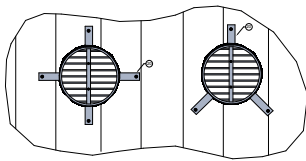


SPEEDPANEL® 4

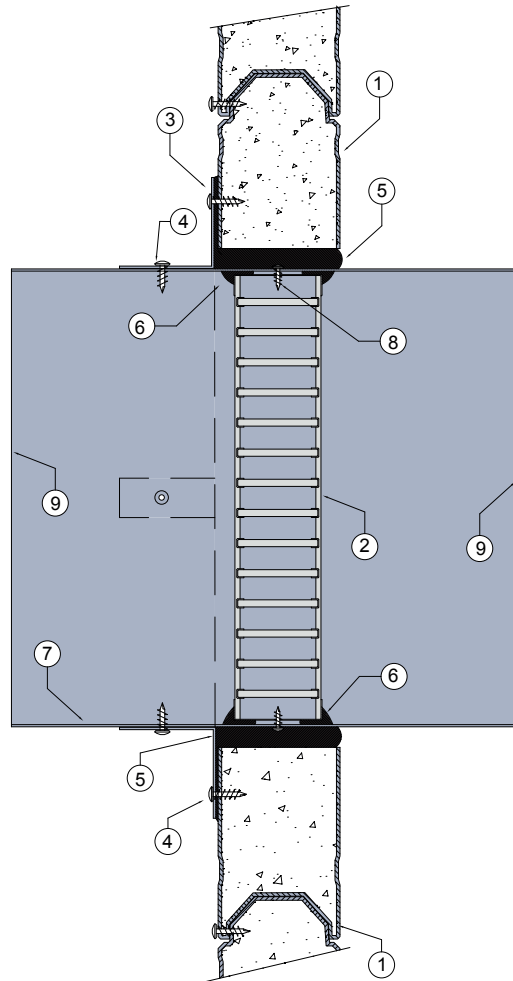
FIRE RATED SPEEDPANEL® WALL SYSTEM

DESCRIPTION

- 1 Speedpanel® wall system with cored out circular aperture.
- 2 Lorient LVH44C intumescent fire damper.
- 3 25mm x 40mm x 40mm x 0.1mm (min) Z275 galvanised steel angle brackets fixed with self drilling screws.
- 4 Angles fixed to wall and casing with steel self drilling screws.
- 5 Gap between casing and aperture filled with Lorient intumescent sealant. Backing rod used as required to control sealant fill depth. Maximum annular gap between casing and wall 25mm.
- 6 Fire damper perimeter sealed with Lorient intumescent sealant.
- 7 Z275 galvanised steel casing minimum 0.6mm.
- 8 LVH44C fixed to casing with steel self drilling screws or pop rivets.
- 9 Casing terminates with breakaway joints, as per AS1682.2.



Circular aperture cored straight through wall.
3 off fixing angles up to 250mm diameter.
4 off fixing angles 300mm to 450mm diameter.



LVH44C in steel casing penetrating fire rated Speedpanel® wall

FRL Up to -/120/60

Fire Resistance in accordance with

AS1530.4 2014

Approval Ref

EXOVA EWFA 33233400

Max size

450mm diameter

Note: LVH44C up to 250mm diameter
can achieve -/120/120 when fitted with
R1.0 Polyester insulated flexible duct
Approval Ref: EXOVA EWFA 55205900

INSTALLATION INSTRUCTIONS

- ▶ Prepare the wall opening to accept the fire damper and install in wall, as shown in system detail.
- ▶ Centralise the casing and firestop the gap between the casing and wall with Lorient intumescent sealant, note fill details in point 6.
- ▶ Perimeter angles are mechanically fixed to casing with steel self drilling screws or pop rivets, as detailed in points 4 & 5.
- ▶ Ductwork shall be connected with breakaway joints, as per point 9.
- ▶ Ensure product identification labels are conspicuously positioned for easy identification.
- ▶ Ensure convenient access is provided to allow for AS1851 inspection and maintenance routines.

▶ Note: Fixings supplied by others.