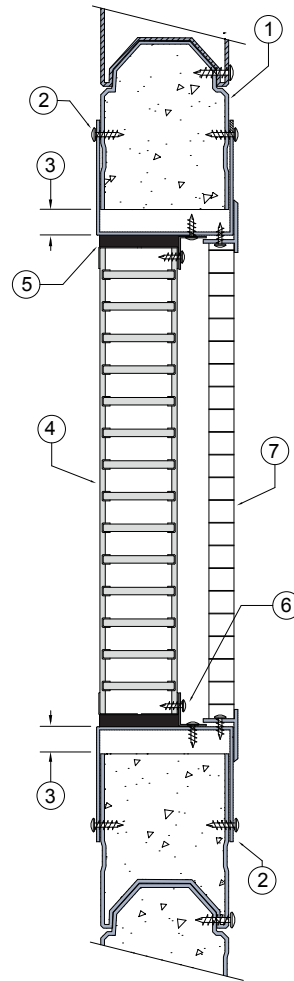


# SPEEDPANEL® 5

## FIRE RATED SPEEDPANEL® WALL SYSTEM

### DESCRIPTION

- |   |   |
|---|---|
| 1 | 78mm Speedpanel® wall system.   |
| 2 | Aperture lined out with box track section screw fixed to wall with 10G self drill steel screws @ 400mm centres (or min 2 per side). |
| 3 | Gap between box channel and aperture varies - max 20mm.   |
| 4 | Lorient LVH44 intumescent fire damper.  |
| 5 | Gap between damper and aperture filled full depth with Lorient intumescent sealant.   |
| 6 | Angles fixed to wall with steel self drilling screws at 150mm centres.  |
| 7 | Aluminium egg crate supply / return air grille.   |



### LVH44 mounted from one side in fire rated Speedpanel® wall system FRL Up to -/120/30

#### Fire Resistance in accordance with

AS1530.4 2005

#### Approval Ref

EXOVA EWFA 33090200

#### Max single cell size

450mm x 450mm

### INSTALLATION INSTRUCTIONS

- ▶ Prepare the wall opening to accept the fire damper, as per point 2.
  - ▶ Install LVH44 in aperture, as shown in system detail.
  - ▶ Angle brackets are mechanically fixed aperture with steel self drilling screws, as per point 6.
  - ▶ Firestop the gap between the perimeter and wall with Lorient intumescent sealant, note fill details in point 5.
  - ▶ Ensure product identification labels are conspicuously positioned for easy identification.
  - ▶ Ensure convenient access is provided to allow for AS1851 inspection and maintenance routines.
- ▶ **Note:** Supply / return air grille, angles and fixings supplied by others.