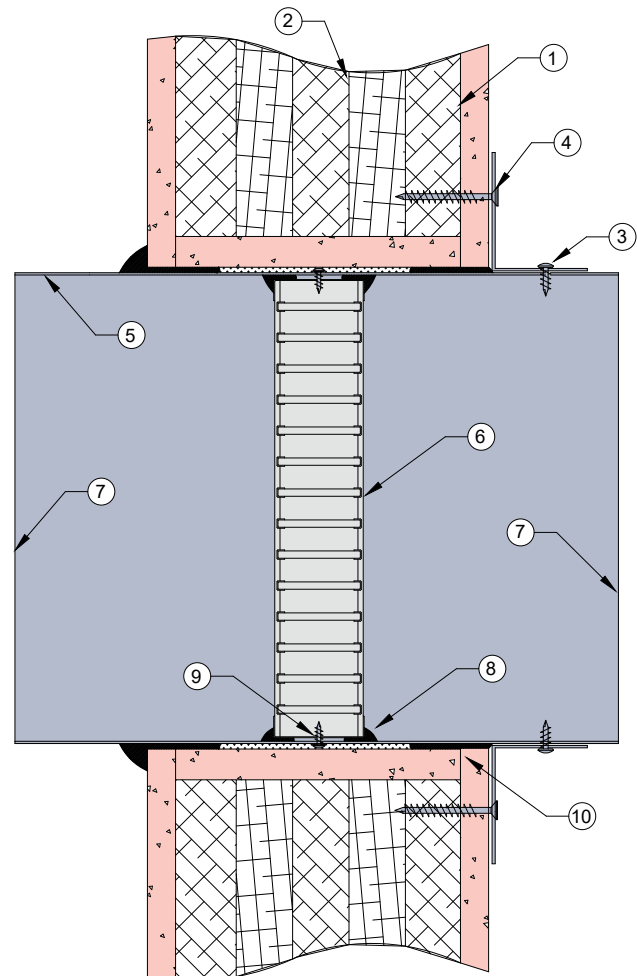


SYSTEM XLAM 2

CROSS LAMINATED TIMBER WALL

DESCRIPTION

- 1 13mm or 16mm fire rated plasterboard fixed to wall and aperture.
- 2 XLam CLT panel. Thickness: 85mm to 315mm.
- 3 Angles fixed to damper casing with steel fasteners at 150mm centres or at least 2 per side.
- 4 0.6mm (min) Z275 galvanised steel angles to all four sides. Angles shall be continuous and at least 2 x the dimension of the gap between the damper casing and the wall. Angles fixed to wall with 50mm long coarse thread screws at 150mm centres or at least 2 per side.
- 5 Z275 galvanised steel casing min thickness 0.6mm.
- 6 Lorient LVH44 intumescent fire damper.
- 7 Casing terminates with breakaway joints as per AS1682.2.
- 8 Fire damper perimeter sealed with Lorient intumescent sealant.
- 9 Fire damper fixed to casing with steel screws.
- 10 Gap between damper and aperture filled with Lorient Intumescent sealant.



**LVH44 in steel casing
penetrating a fire rated
XLam CLT Wall**

FRL Up to -/120/60

**Fire Resistance in
accordance with**

AS1530.4 2014

Approval Ref

CSIRO FCO 3300

Maximum size

Area not to exceed 0.2m²

INSTALLATION INSTRUCTIONS

- ▶ Prepare the wall opening to accept the fire damper as per point 1.
 - ▶ Mechanically fix angle brackets to one side of damper casing with steel screws as per point 3.
 - ▶ Install casing in aperture and firestop the gap between the casing and wall as per point 10.
 - ▶ Fix angles to wall steel screws as per point 4.
 - ▶ Ensure product identification labels are conspicuously positioned for easy identification.
 - ▶ Ensure convenient access is provided to allow for AS1851 inspection and maintenance routines.
- ▶ **Note: Angles and fixings supplied by others.**