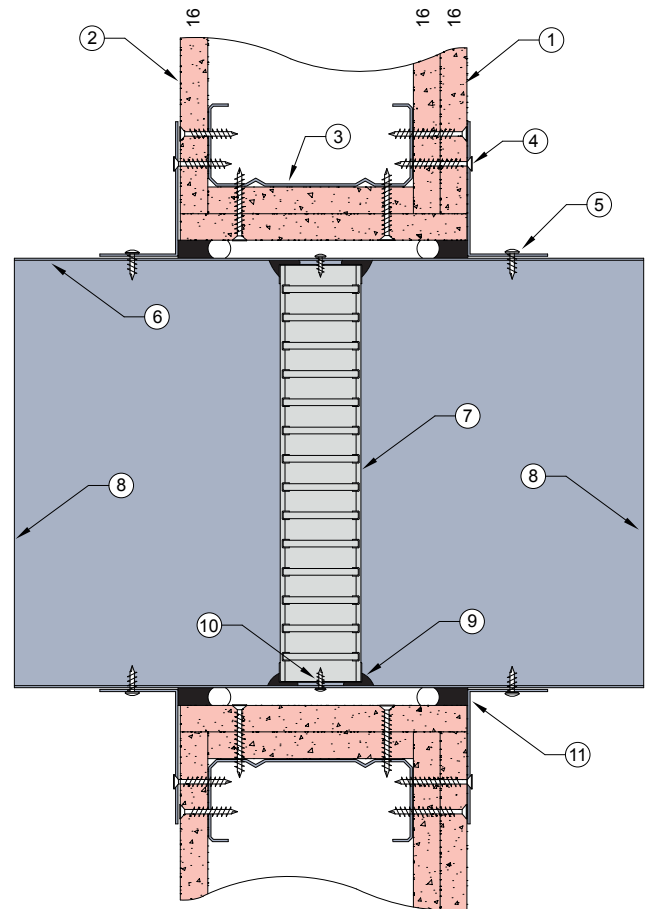


# STUD WALL 12

## FIRE RATED PLASTERBOARD WALL SYSTEM

### DESCRIPTION

- |    |                                                                                                                                                                                                                                                                                                     |
|----|-----------------------------------------------------------------------------------------------------------------------------------------------------------------------------------------------------------------------------------------------------------------------------------------------------|
| 1  | 2 x 16mm fire rated plasterboard.                                                                                                                                                                                                                                                                   |
| 2  | 16mm fire rated plasterboard.                                                                                                                                                                                                                                                                       |
| 3  | Steel stud and 2 x 16mm lining out aperture.                                                                                                                                                                                                                                                        |
| 4  | Angles fixed to steel framing at 150mm centres or at least 2 per side.                                                                                                                                                                                                                              |
| 5  | 0.6mm (min) Z275 galvanised steel angles to all four sides. Angle dimensions shall be continuous and at least 2 x the dimension of the gap between the damper casing and the penetrated element.<br>Each angle fixed to damper casing with steel fasteners at 150mm centres or at least 2 per side. |
| 6  | Z275 galvanised steel casing minimum thickness 0.6mm.                                                                                                                                                                                                                                               |
| 7  | Lorient LVH44 intumescent fire damper screw fixed into casing.                                                                                                                                                                                                                                      |
| 8  | Casing terminates with breakaway joints, as per AS1682.2.                                                                                                                                                                                                                                           |
| 9  | Fire damper perimeter sealed with Lorient intumescent sealant.                                                                                                                                                                                                                                      |
| 10 | Fire damper fixed to casing with steel screws.                                                                                                                                                                                                                                                      |
| 11 | Gap between casing and aperture filled with Lorient intumescent sealant. Backing rod used as required to control sealant fill depth. Maximum annular gap between casing and wall 25mm.                                                                                                              |



### LVH44 in steel casing penetrating fire rated Plasterboard wall

**FRL -/120/-**

### Fire Resistance in accordance with

AS1530.4 2014

### Approval Ref

CSIRO FCO 3149

### Max single cell size

600mm x 600mm

### INSTALLATION INSTRUCTIONS

- ▶ Line out the wall opening to accept the fire damper, as shown in this system detail.
- ▶ Centralise the damper casing and firestop the gap between the casing and wall with Lorient intumescent sealant, see point 11 for fill details.
- ▶ Perimeter angles are mechanically fixed to casing with steel self drilling screws and to wall with appropriate length needle point drywall screws, as detailed in points 4 & 5.
- ▶ Ductwork shall be connected with breakaway joints, as per point 8.
- ▶ Ensure product identification labels are conspicuously positioned for easy identification.
- ▶ Ensure convenient access is provided to allow for AS1851 inspection and maintenance routines.
- ▶ **Note: Damper casings, angles and fixings supplied by others.**