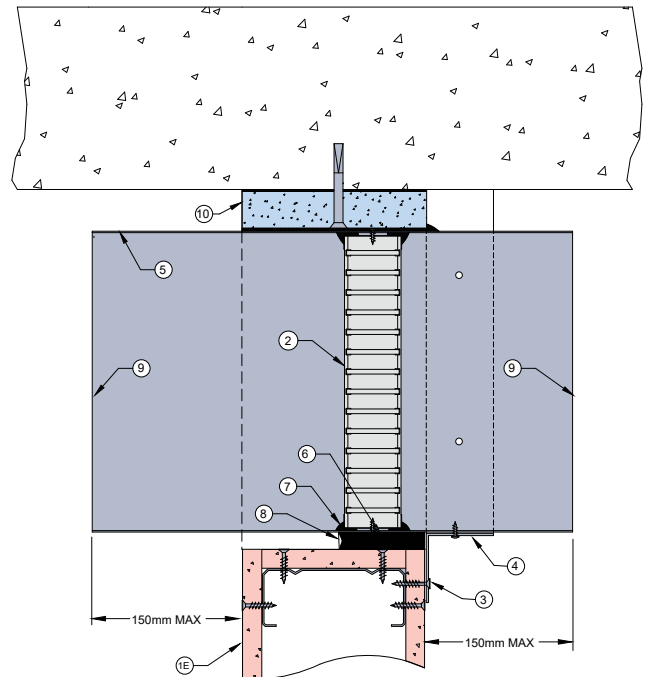


# STUD WALL 19 TIGHT TO SLAB

## FIRE RATED PLASTERBOARD WALL SYSTEM

### DESCRIPTION

- |           |  |
|-----------|--|
| <b>1E</b> | 16mm fire rated plasterboard.  |
| <b>2</b>  | Lorient LVH44 intumescent fire damper.   |
| <b>3</b>  | Angles fixed to wall with steel screws at 150mm centres or at least 2 per side.  |
| <b>4</b>  | 0.6mm (min) Z275 galvanised steel angles to all three sides. Angle dimensions shall be continuous and at least 2 x the dimension of the gap between the damper casing and the penetrated element.<br>Each angle fixed to damper casing with steel fasteners at 150mm centres or at least 2 per side. |
| <b>5</b>  | Z275 galvanised steel casing min thickness 0.6mm.  |
| <b>6</b>  | Fire damper fixed to casing with steel screws.   |
| <b>7</b>  | Fire damper perimeter sealed with Lorient intumescent sealant.   |
| <b>8</b>  | Gap between casing and aperture filled full depth with Lorient intumescent sealant. Maximum annular gap between casing and wall is 25mm.   |
| <b>9</b>  | Casing terminates with breakaway joint as per AS1682.2   |
| <b>10</b> | 100mm wide x 50mm thick TBA Firefly Intubatt or non-combustible block running full width of aperture. Bedded in Lorient intumescent sealant and mechanically fixed to slab with steel expanding anchors.   |



**LVH44 in steel casing  
penetrating fire rated  
Plasterboard wall – tight  
to slab**

**FRL Up to -/90/60**

**Fire Resistance in  
accordance with**

AS1530.4 2014

**Approval Ref**

EXOVA EWFA 33233400

**Max size**

450mm x 450mm

### INSTALLATION INSTRUCTIONS

- ▶ Prepare the wall opening to accept the fire damper and install in wall, as shown in this system detail.
- ▶ Non-combustible TBA Intubatt block is fixed to slab, as per point 10.
- ▶ Lorient intumescent sealant liberally applied to block and duct containing damper is positioned and pushed up tight to block.
- ▶ Firestop the gap between the casing and wall with Lorient intumescent sealant, note fill details in point 8.
- ▶ 3 off perimeter angles are mechanically fixed to bottom and sides of casing with steel self drilling screws and fixed to wall with masonry anchors, as detailed in point 3.
- ▶ Ductwork shall be connected with breakaway joints, as per point 9.
- ▶ Ensure product identification labels are conspicuously positioned for easy identification.
- ▶ Ensure convenient access is provided to allow for AS1851 inspection and maintenance routines.
- ▶ **Note: Damper casing, angles and fixings supplied by others.**